

Water Weekly

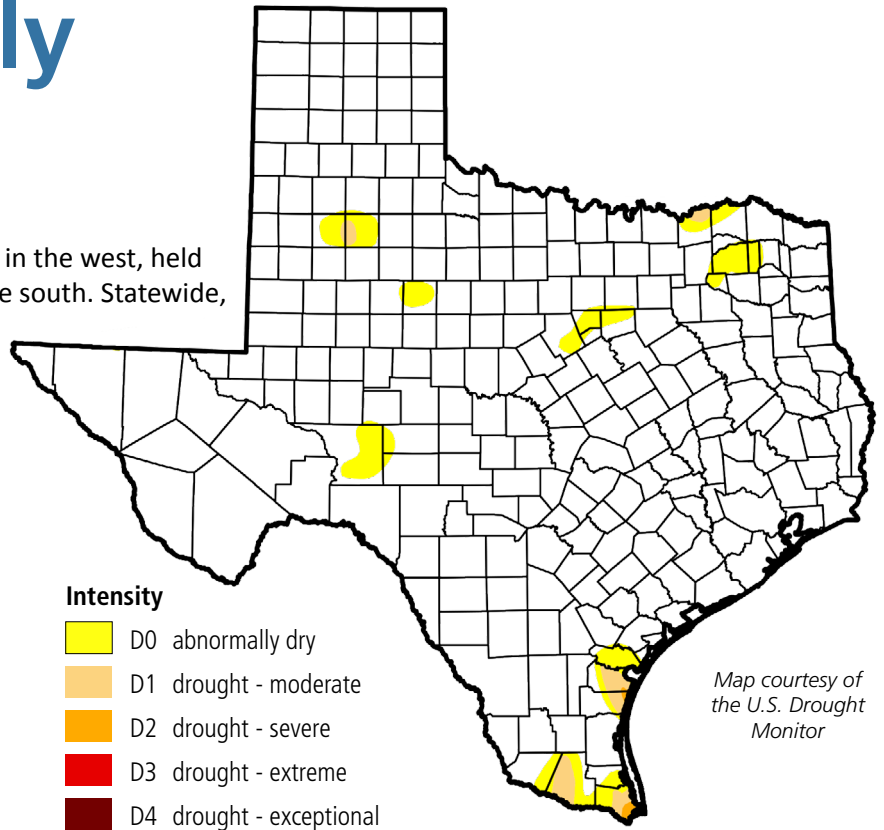
For the week of 09/26/16

Water conditions

For a second week in a row, drought weakened in the west, held steady in the northeast, but strengthened in the south. Statewide, we had a 0.25 percentage point increase in the area impacted by drought. Even so, less than 1 percent of the state is currently in drought.

Drought conditions

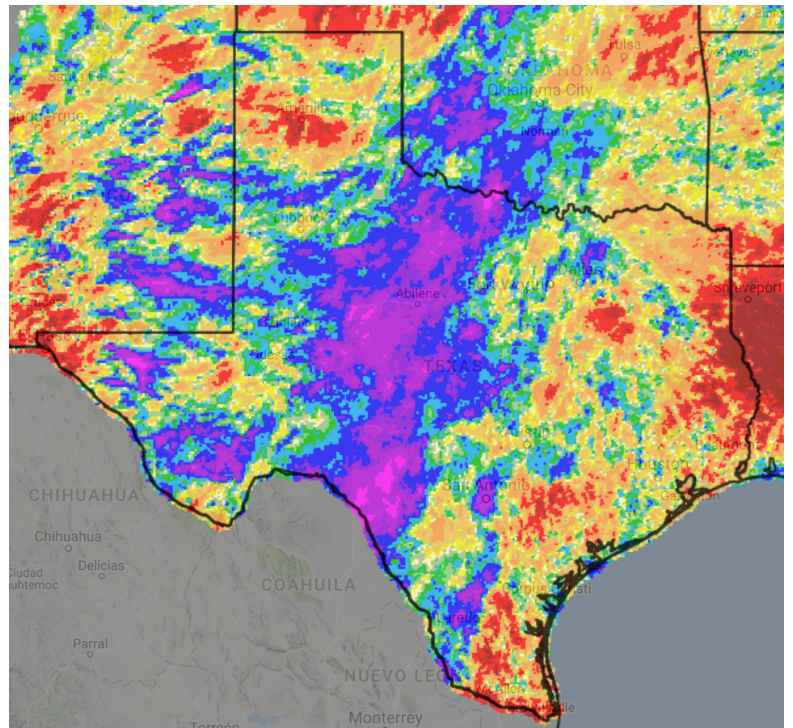
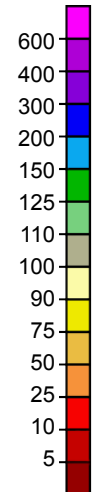
- ◆ 1% now
- ◆ 1% a week ago
- ◆ 0% three months ago
- ◆ 30% a year ago



14-day percent precipitation

This map of percent of normal rainfall over the past two weeks shows the path of the recent rains as well as the spots the rains missed.

Percent of normal



Map courtesy of NOAA

Written by Dr. Robert Mace — Dr. Robert Mace is the TWDB Deputy Executive Administrator for Water Science and Conservation. Robert has a B.S. in Geophysics, an M.S. in Hydrology, and a Ph.D. in Hydrogeology. He has been at TWDB since 1999.

Tulsi Oberbeck, Governmental Relations | tulsi.oberbeck@twdb.texas.gov | 512-463-4864
Kimberly Leggett, Media Relations | kimberly.leggett@twdb.texas.gov | 512-463-5129