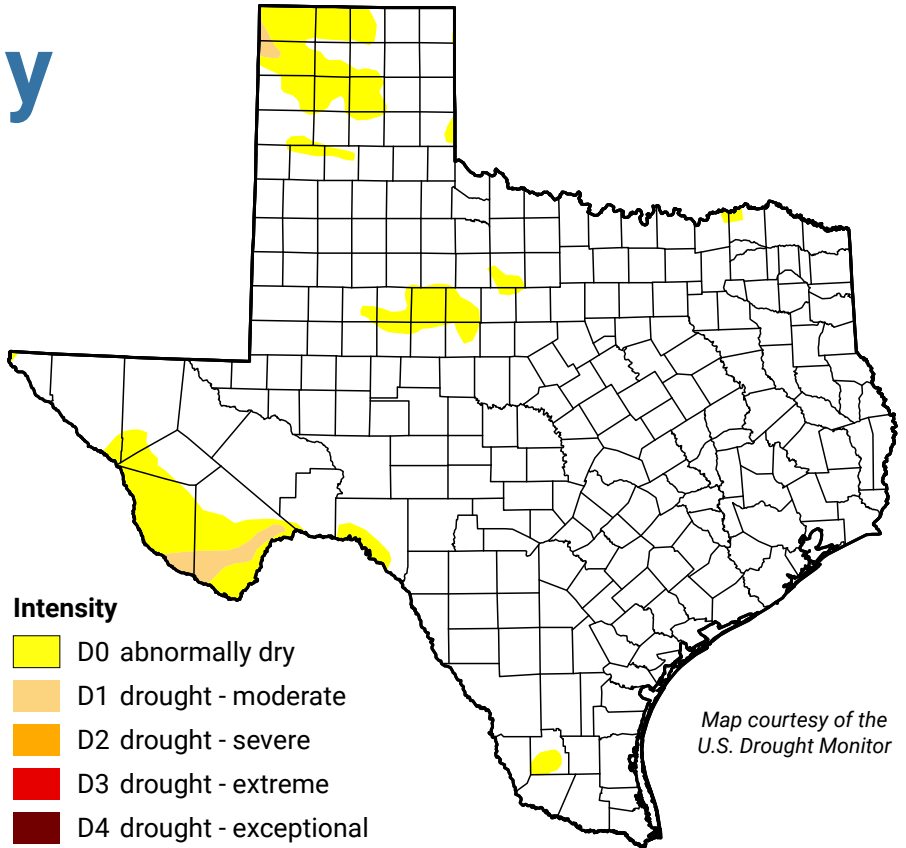


Water Weekly

For the week of 09/06/21

Water conditions

The most recent drought map for conditions as of August 31 shows contraction of drought in the Big Bend area combined with a new pocket of drought in the northwest corner of the Panhandle. Overall, the area of the state impacted by drought shrank less than half a percentage point.



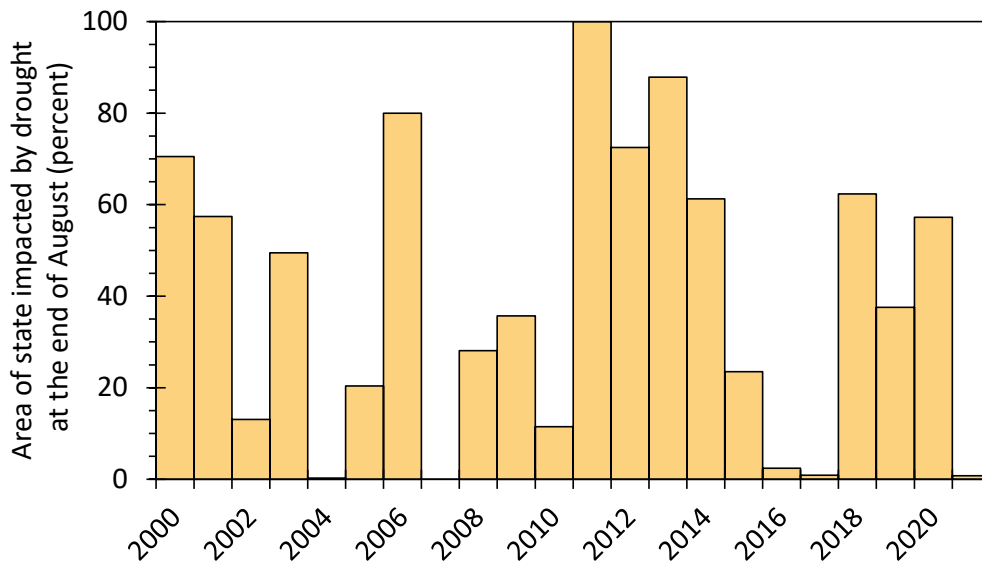
Map courtesy of the U.S. Drought Monitor

Drought conditions

- ◆ 0.8% now
- ◆ 1% a week ago
- ◆ 19% three months ago
- ◆ 55% a year ago

Intensity

- D0 abnormally dry
- D1 drought - moderate
- D2 drought - severe
- D3 drought - extreme
- D4 drought - exceptional



End-of-August drought conditions

Since 2000, Texas has averaged 40 percent of the state impacted by drought at the end of August. This year, less than one percent of the state is impacted by drought, the lowest value since 2007 and the third lowest since 2000.

Data courtesy of USDM

Written by Dr. Mark Wentzel – Dr. Mark Wentzel is a hydrologist in the TWDB's Office of Water Science and Conservation.

Bryan McMath, Governmental Relations | bryan.mcmath@twdb.texas.gov | 512-463-7850
 Kaci Woodrome, Media Relations | kaci.woodrome@twdb.texas.gov | 512-475-1720