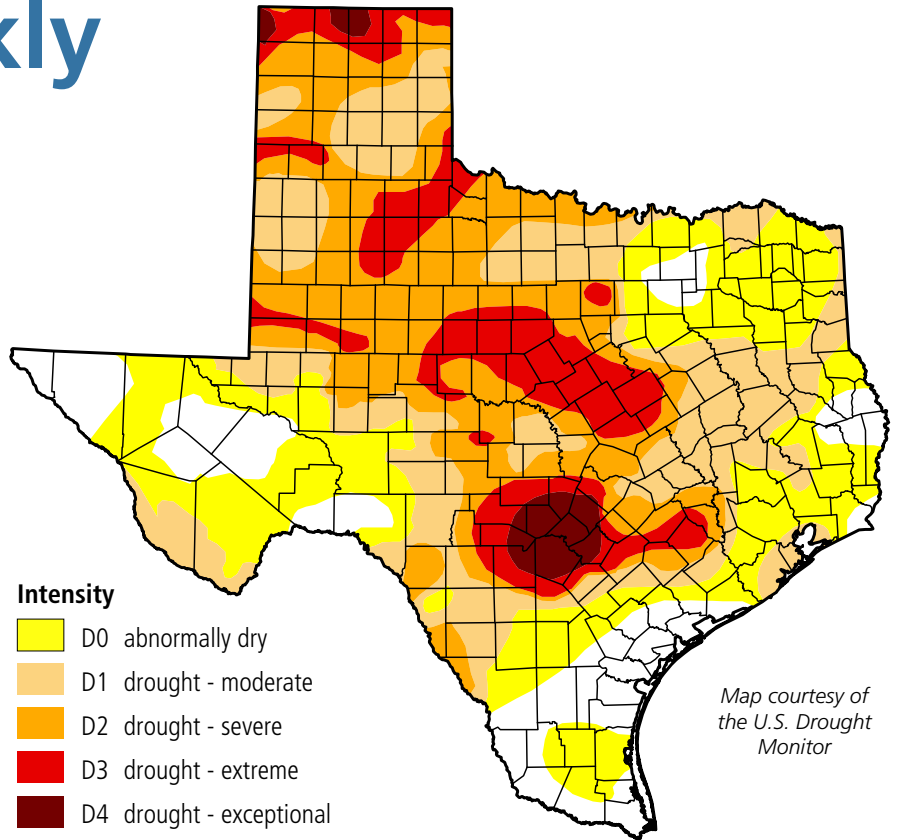


Water Weekly

For the week of 11/28/22

Water conditions

The latest drought monitor map, for conditions as of November 22, shows a decrease in the area of the state impacted by drought for the fourth consecutive week. Conditions continued to improve in East Texas, but drought has lingered and even intensified in some parts of Central Texas.



Map courtesy of the U.S. Drought Monitor

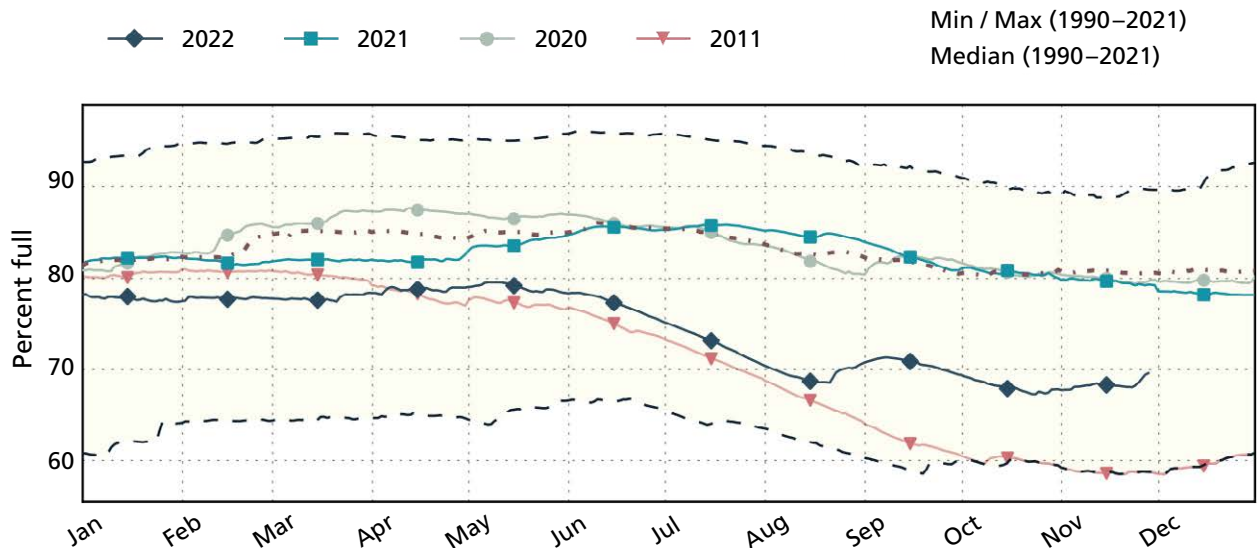
Drought conditions

- ◆ 63% now
- ◆ 64% a week ago
- ◆ 87% three months ago
- ◆ 40% a year ago

Water conditions

TWDB chart

After reaching a low of 67 percent in late October 2022, statewide reservoir storage has rebounded to almost 70 percent of capacity. Late November storage is almost 11 percentage points better than in 2011 but still nearly 11 percentage points below normal for this time of year.



Written by Dr. Mark Wentzel — Dr. Mark Wentzel is a hydrologist in the TWDB's Office of Water Science and Conservation.

Bryan McMath, Governmental Relations | bryan.mcmath@twdb.texas.gov | 512-463-7850
 Media Relations | MediaRelations@twdb.texas.gov | 512-463-5129