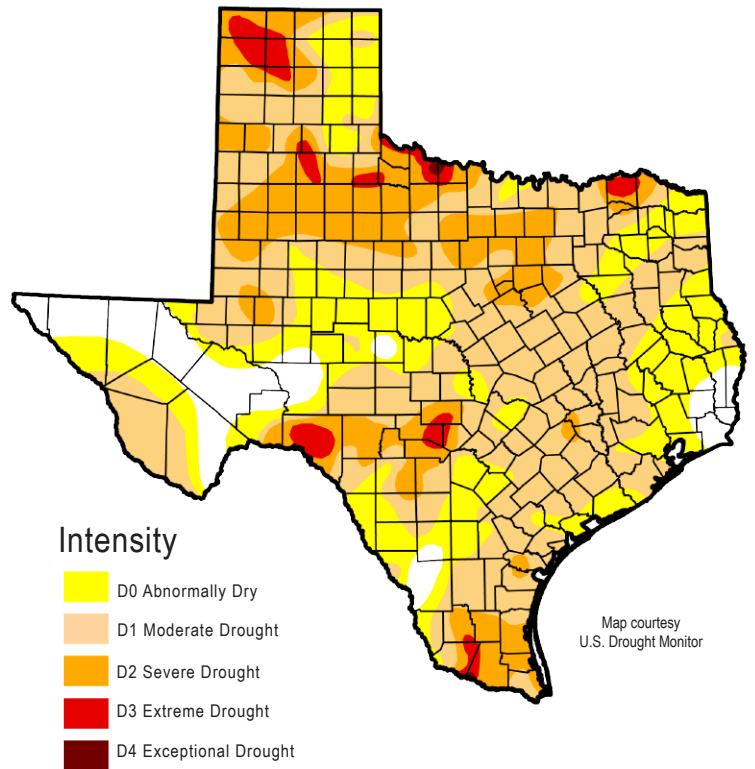


DROUGHT CONDITIONS THIS WEEK

According to the U.S. Drought Monitor, fall rains continue to ease drought conditions, but our water-supply drought continues. For example, the Drought Monitor shows the El Paso area no longer in drought, but Elephant Butte Reservoir, a major source of water for the area, is less than 9 percent full. The U.S. Seasonal Drought Outlook, looking out through January 2014, predicts the end of drought conditions in east and parts of central and south central Texas but continued drought in the Lower Rio Grande Valley and West Texas and redevelopment of drought in Far West Texas.

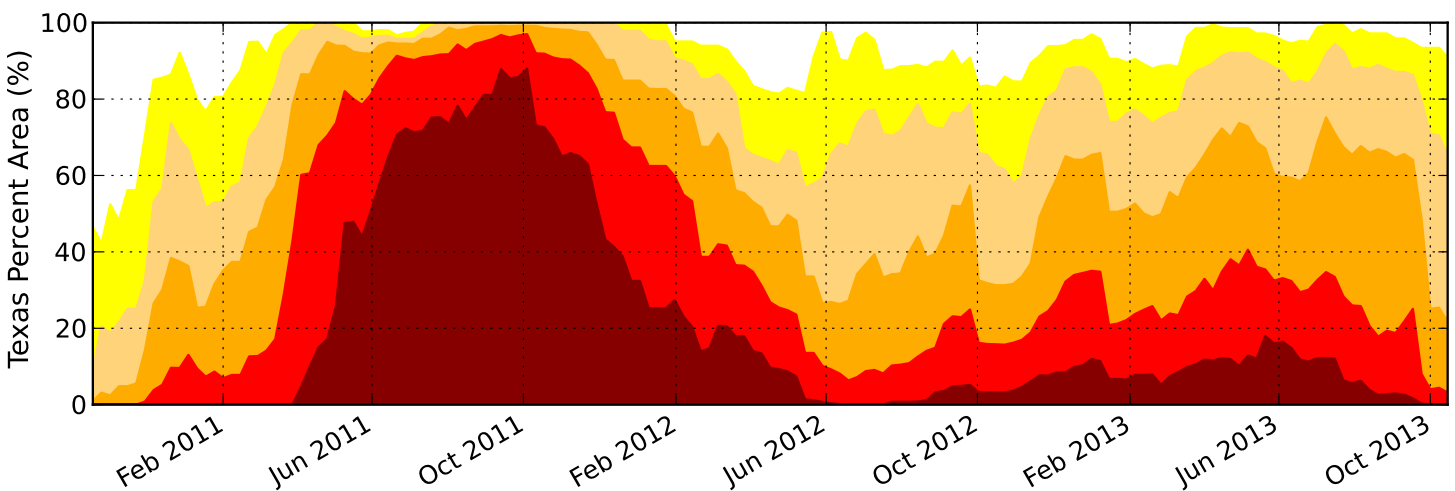


Current Drought statistics

- 91% of state currently in drought
- 93% a week ago
- 99% three months ago
- 83% a year ago

A LONG-TERM VIEW OF THE DROUGHT

Looking at conditions going back to October 2010, this plot shows the variance in drought categories across Texas. The three most severe categories (orange, red, and dark red on the plot) are now at their lowest percentage in more than two years. However, most of the state is still in some stage of drought, and we've got a long way to go to before we're out of drought entirely.



Get more drought information on TWDB's website and social media accounts!

www.twdb.texas.gov



www.facebook.com/twdbboard



[@twdb](https://twitter.com/twdb)