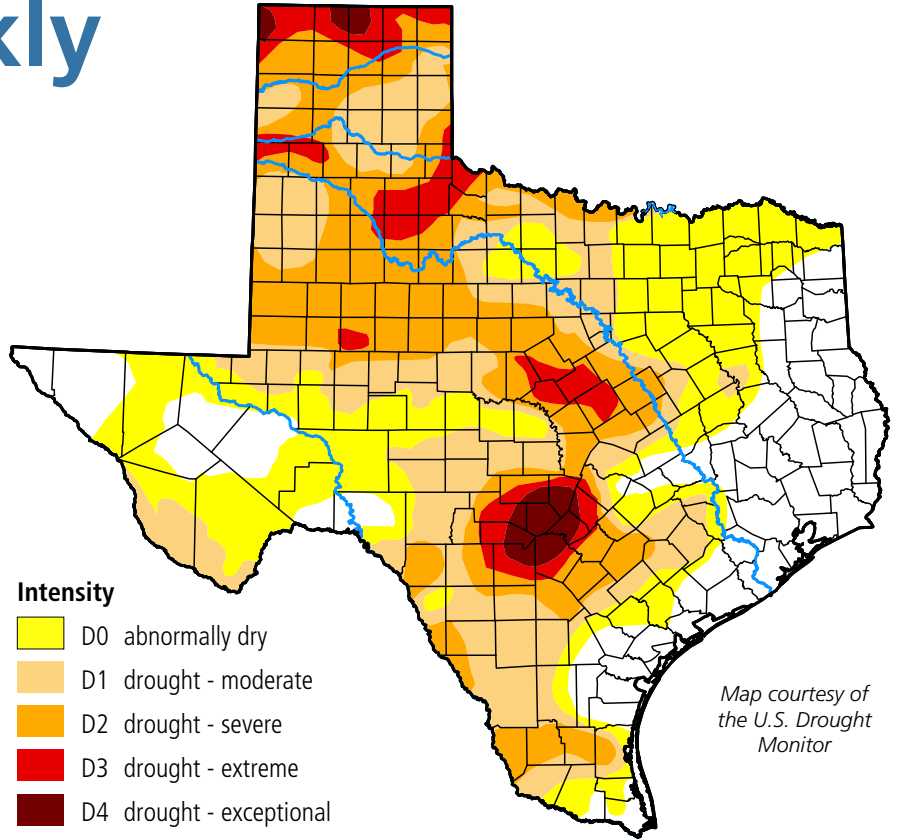


Water Weekly

For the week of 01/30/23

Water conditions

This week's drought monitor map, for conditions as of January 24, shows little change from last week. Recent precipitation stalled the expansion of drought across the state. But more precipitation will be required in the Panhandle and Central and South Texas in order to reduce the area impacted by drought.



Map courtesy of the U.S. Drought Monitor

Drought conditions

- ◆ 55% now
- ◆ 55% a week ago
- ◆ 75% three months ago
- ◆ 87% a year ago

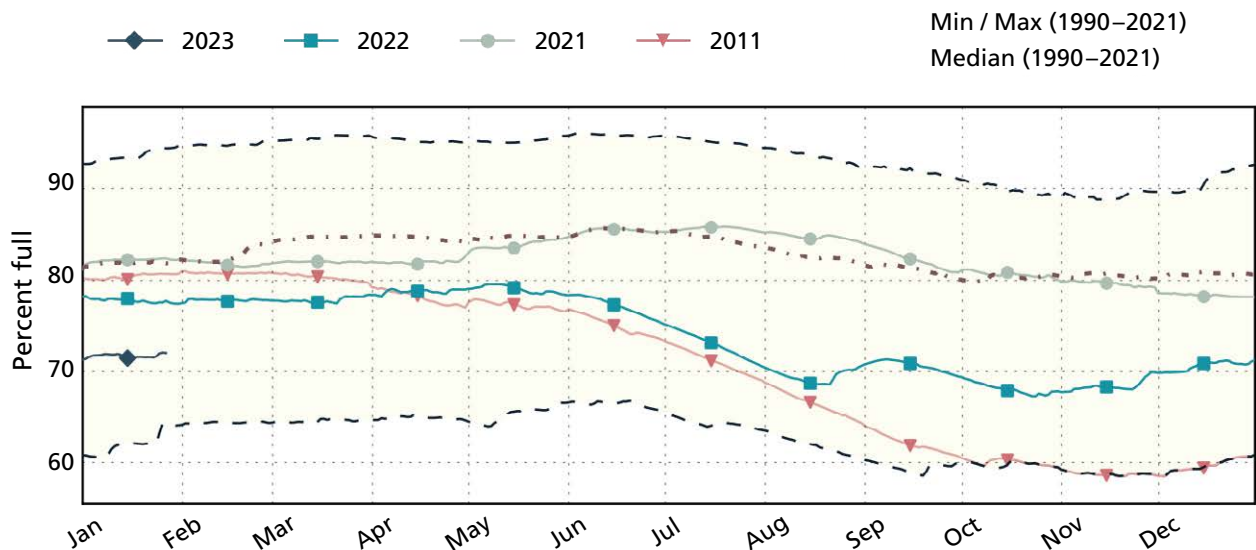
Intensity

- ◆ D0 abnormally dry
- ◆ D1 drought - moderate
- ◆ D2 drought - severe
- ◆ D3 drought - extreme
- ◆ D4 drought - exceptional

Statewide reservoir storage

TWDB chart

Statewide reservoir storage is currently at 72 percent of conservation capacity, which is 10 percentage points less than normal for this time of year. But conditions continue to vary considerably across the state. Dallas' storage is within one percentage point of normal while Waco's is more than 40 percentage points lower than normal.



Written by Dr. Mark Wentzel — Dr. Mark Wentzel is a hydrologist in the TWDB's Office of Water Science and Conservation.

Bryan McMath, Governmental Relations | bryan.mcmath@twdb.texas.gov | 512-463-7850
 Media Relations | MediaRelations@twdb.texas.gov | 512-463-5129