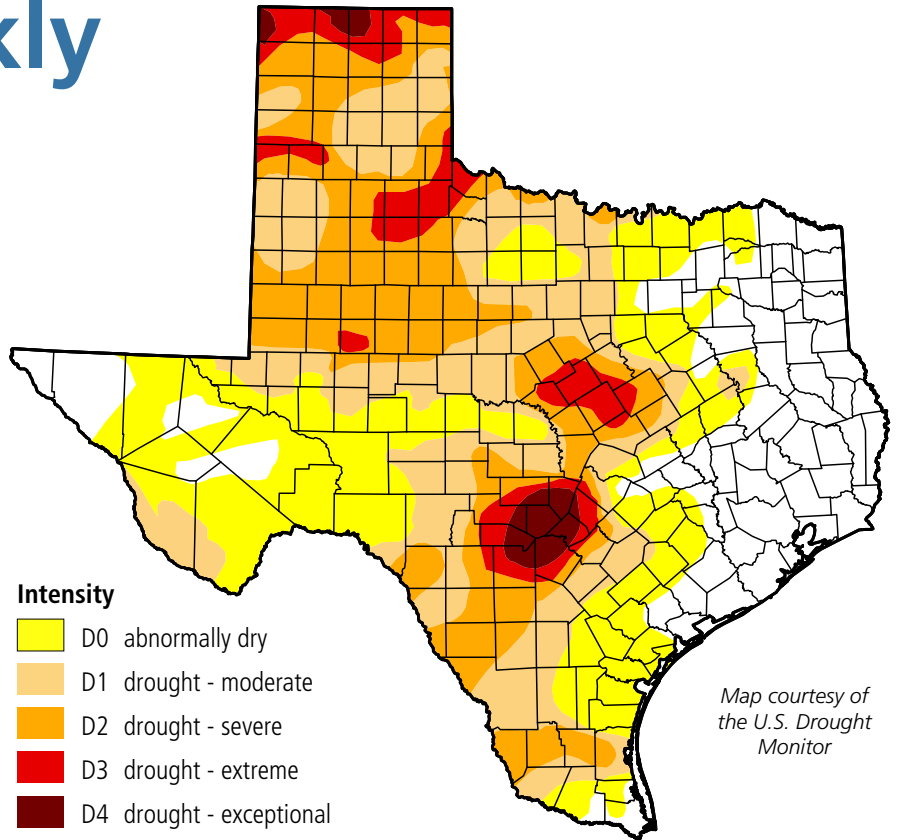


Water Weekly

For the week of 02/13/23

Water conditions

The latest drought monitor map, for conditions as of February 7, shows little change from the previous week. The area of the state impacted by drought decreased by less than one percentage point. Nevertheless, it was the first time in 2023 that drought contracted in consecutive weeks.



Map courtesy of the U.S. Drought Monitor

Drought conditions

- ◆ 53% now
- ◆ 53% a week ago
- ◆ 65% three months ago
- ◆ 78% a year ago

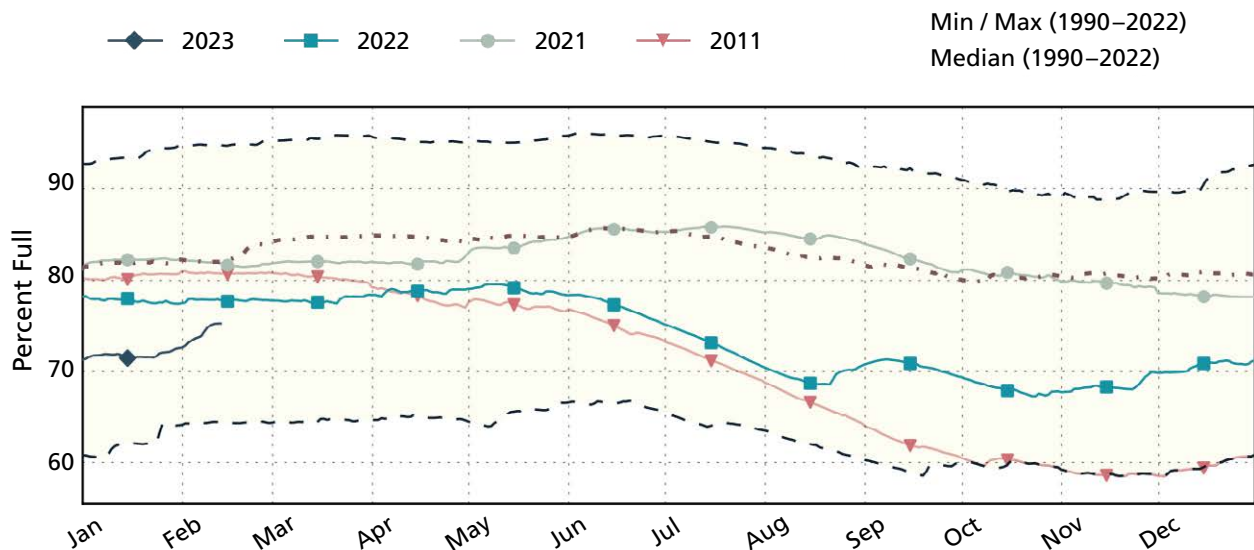
Intensity

- D0 abnormally dry
- D1 drought - moderate
- D2 drought - severe
- D3 drought - extreme
- D4 drought - exceptional

Statewide reservoir storage

TWDB chart

In the last month, statewide surface water supply has increased by almost four percent of capacity (about 1.2 million acre-feet). Supplies in East Texas reservoirs have increased by more than 800,000 acre-feet since mid-January. Supplies in South Texas have declined by nearly 300,000 acre-feet over the same time period.



Written by Dr. Mark Wentzel — Dr. Mark Wentzel is a hydrologist in the TWDB's Office of Water Science and Conservation.

Bryan McMath, Governmental Relations | bryan.mcmath@twdb.texas.gov | 512-463-7850
Media Relations | MediaRelations@twdb.texas.gov | 512-463-5129