

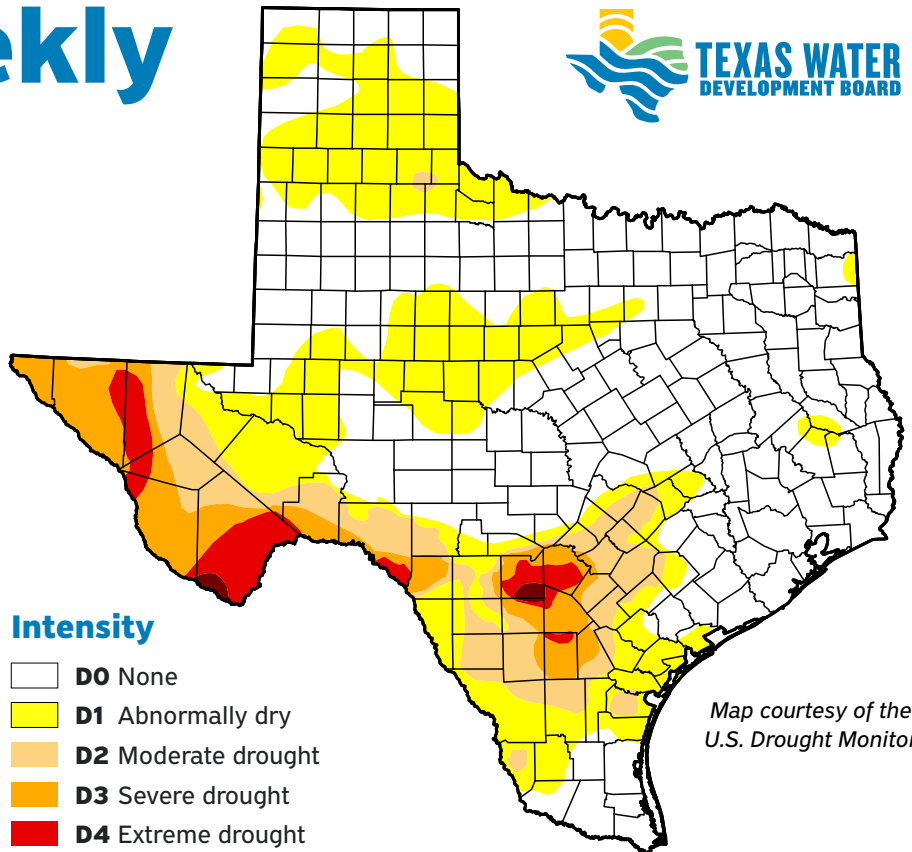
Water Weekly

For the week of 09/15/25



Water conditions

The latest drought map for conditions as of September 9 shows the smallest area of drought in almost four years. However, more than a quarter of the state has become abnormally dry and susceptible to falling into drought in the next few weeks.



Map courtesy of the U.S. Drought Monitor

Drought conditions

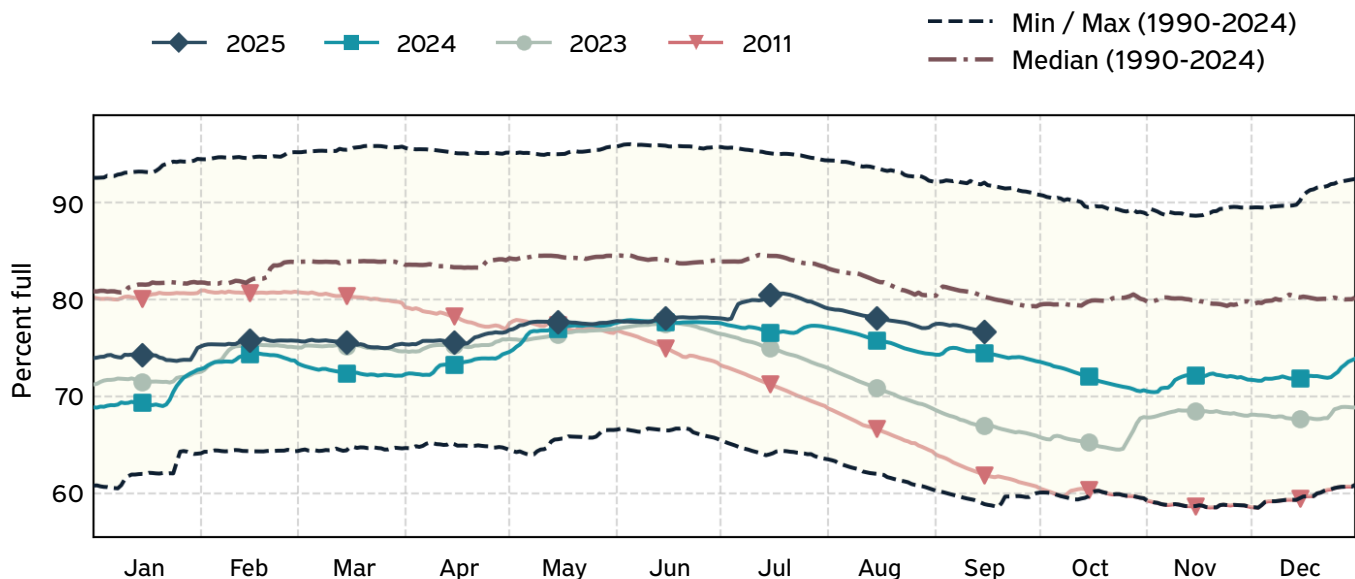
19% now
20% a week ago
34% three months ago
32% a year ago

Intensity

- D0** None
- D1** Abnormally dry
- D2** Moderate drought
- D3** Severe drought
- D4** Extreme drought
- D5** Exceptional drought

Statewide water storage

Since mid-July 2025, statewide water supply storage has remained two or more percentage points above values from last year. Reservoirs in and to the north of the Colorado Basin generally have more water in storage than normal for this time of year, but levels in reservoirs to the south of the basin are well below normal.



TWDB chart

By Dr. Mark Wentzel, Hydrologist, Office of Water Science and Conservation

Jonathan Mathers, Government Relations | Jonathan.Mathers@twdb.texas.gov | 512-463-7848

Media Relations | MediaRelations@twdb.texas.gov | 512-463-5129

www.twdb.texas.gov

