

Water Weekly

For the week of 01/12/26



Water conditions

The latest drought map for conditions as of January 6 shows an increase in drought area, the eighth weekly increase in the last 10 weeks. Drought area has reached its largest extent since mid-November 2025 and is poised for further expansion in the coming weeks.

Drought conditions

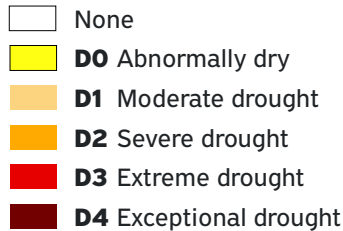
57% now

53% a week ago

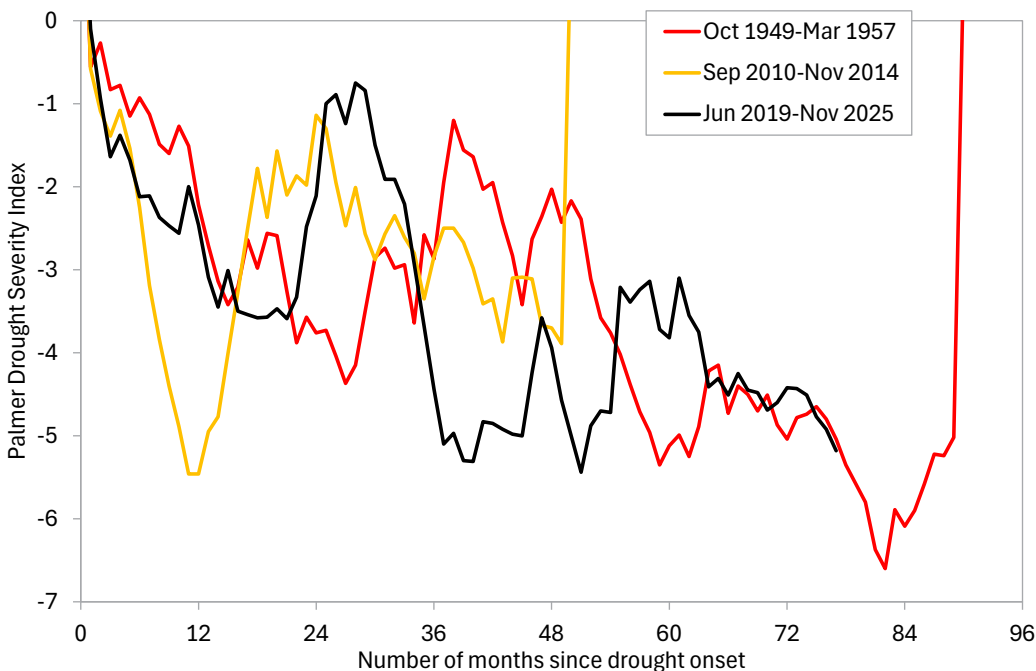
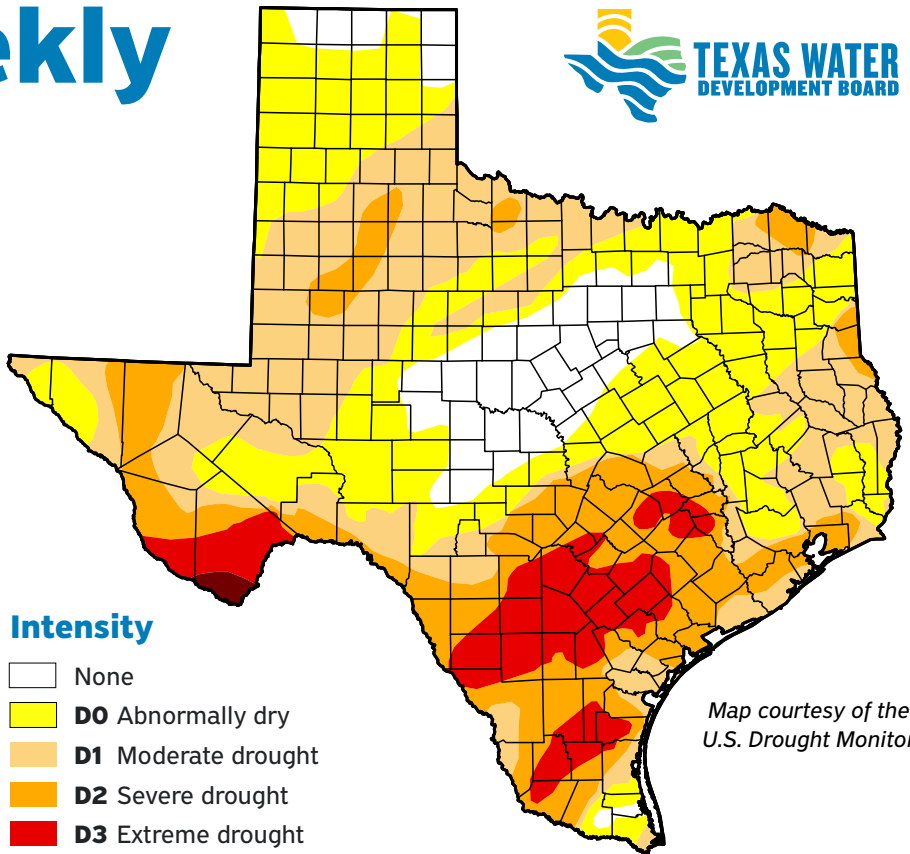
26% three months ago

44% a year ago

Intensity



Map courtesy of the U.S. Drought Monitor



Bexar County drought

Historic drought periods with a monthly Palmer Drought Severity Index below zero occurred in Bexar County between 1949–1957 and 2010–2014. The current drought, which began in 2019, has nearly equaled the intensity of the 2010–2014 drought and is approaching the duration of the 1949–1957 drought.

Graphic courtesy of NOAA

By Dr. Mark Wentzel, Hydrologist, Office of Water Science and Conservation

Jonathan Mathers, Government Relations | Jonathan.Mathers@twdb.texas.gov | 512-463-7848

Media Relations | MediaRelations@twdb.texas.gov | 512-463-5129

www.twdb.texas.gov

