

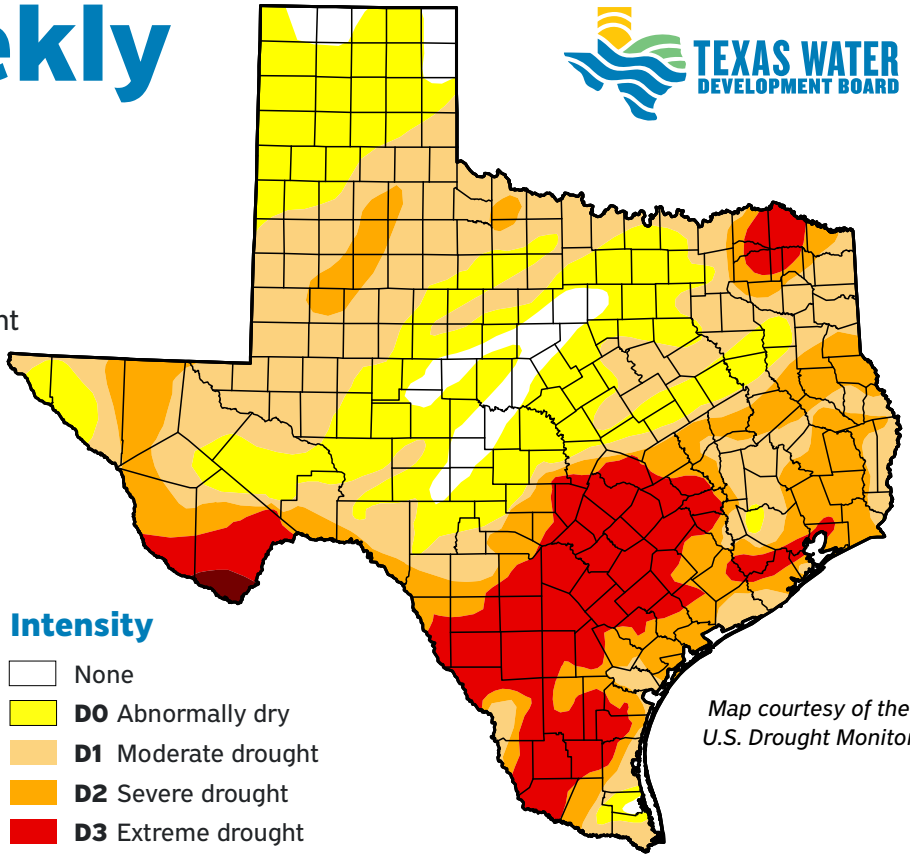
Water Weekly

For the week of 01/26/26



Water conditions

The latest drought map for conditions as of January 20 shows an increase in drought area, the seventh consecutive week with an increase. Drought area has reached its largest extent since March 2025. Severe drought covers more than a third of the state, the most since April 2025.



Map courtesy of the
U.S. Drought Monitor

Drought conditions

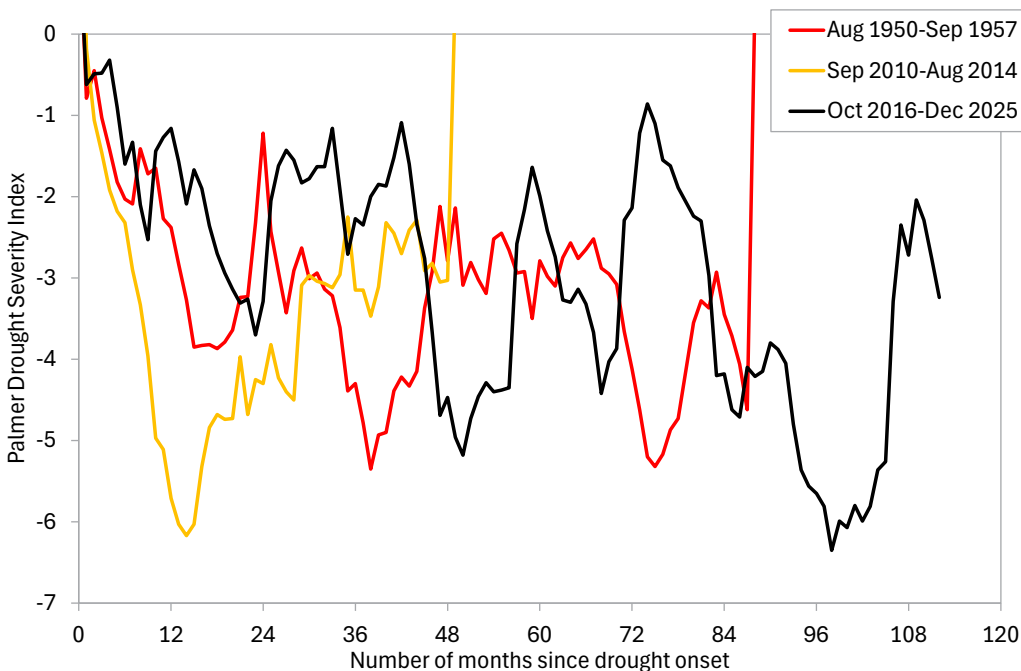
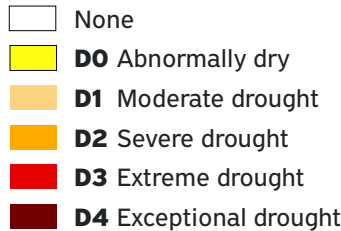
68% now

63% a week ago

43% three months ago

42% a year ago

Intensity



Jeff Davis County drought

Jeff Davis County in West Texas may be experiencing a new drought-of-record as measured by the monthly Palmer Drought Severity Index (PDSI). The current drought, which began in October 2016, is now longer than the 1950–1957 drought and has achieved a more severe (lower) PDSI value than the 2010–2014 drought.

Graphic courtesy of NOAA

By Dr. Mark Wentzel, Hydrologist, Office of Water Science and Conservation

Jonathan Mathers, Government Relations | Jonathan.Mathers@twdb.texas.gov | 512-463-7848

Media Relations | MediaRelations@twdb.texas.gov | 512-463-5129

www.twdb.texas.gov

